

LAKEVIEW PLACE I

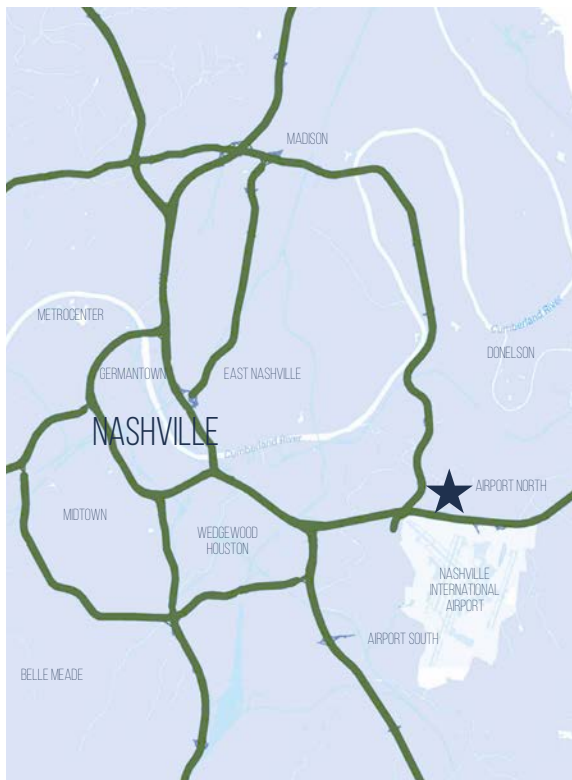
25 CENTURY BLVD | NASHVILLE, TENNESSEE

A 116,654 SQUARE FOOT CLASS A OFFICE BUILDING LOCATED IN THE AIRPORT NORTH



LAKEVIEW PLACE

The Lakeview office portfolio consists of three Class A office buildings totaling 382,164 SF located in the prestigious Century City office park. The buildings were built between 1986 and 1998 and have been institutionally owned and professionally managed since they were developed. The office park boasts some of the nicest buildings in the entire city and is occupied by household names such as Anthem, CNA Insurance and Proctor & Gamble.



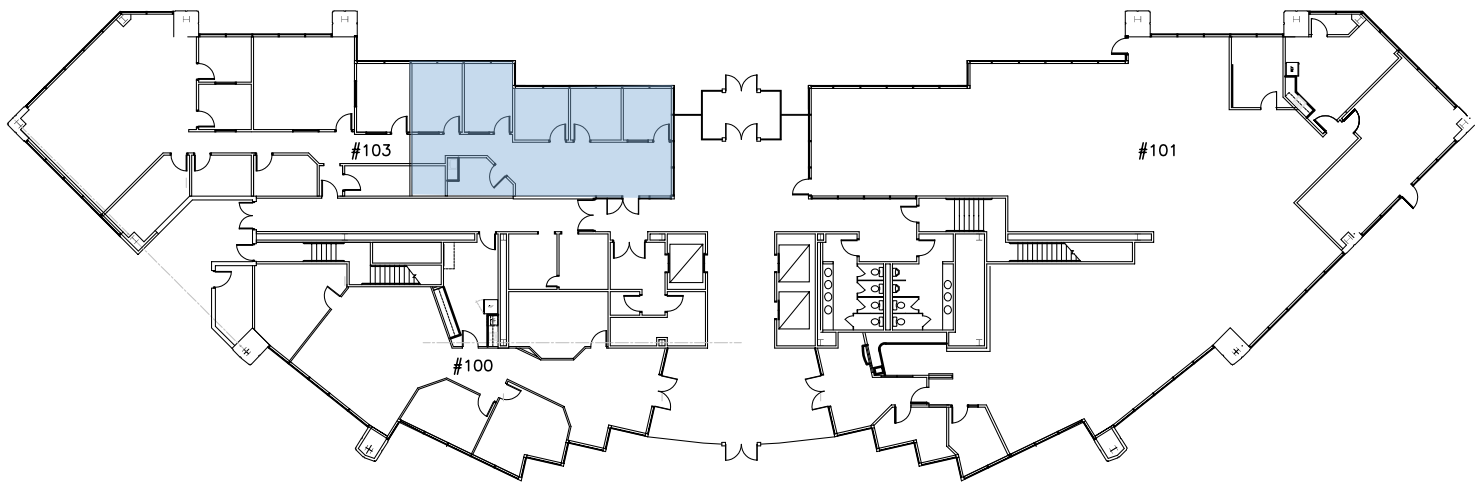
PRIME CENTURY CITY LOCATION

- Covered outdoor seating area
- Recent building upgrades
- Full floor availability
- Convenient to I-40 and Nashville International Airport
- Numerous amenities nearby
- Most competitive Class A lease rate in the office park
- 5/1,000 parking ratio
- Conference room open to all Tenants in the office park
- FOODA daily onsite food service
- Onsite property management

FLOOR PLANS & AVAILABILITY

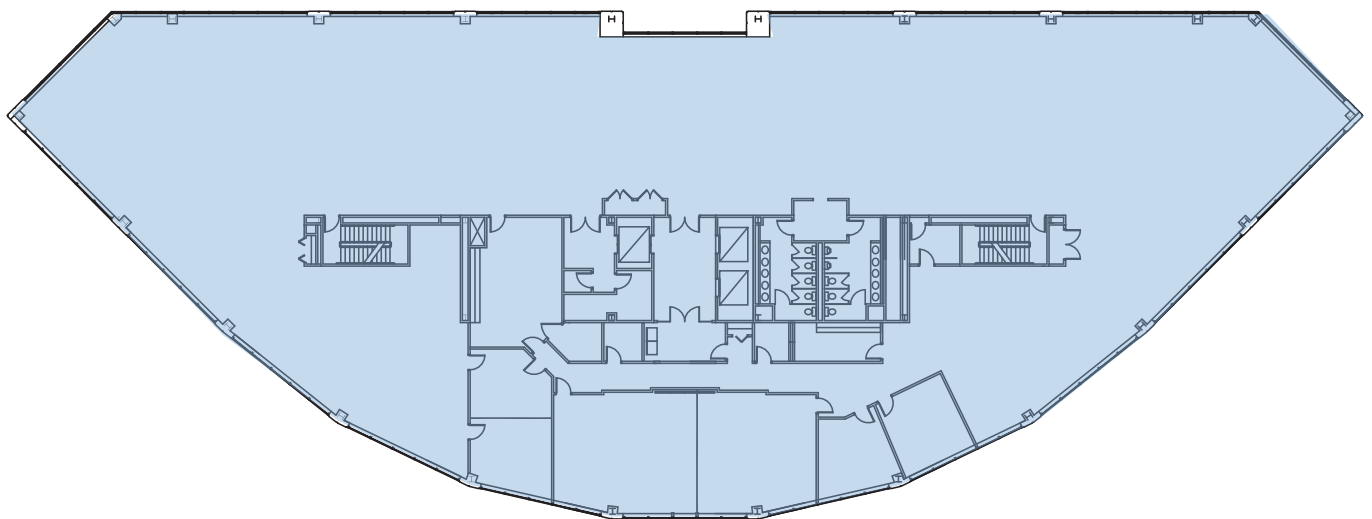
1ST FLOOR

- Suite 102 - 1,258 SF
Available Sept. 2019



3RD FLOOR

- Suite 300 - 20,867 SF



LAKEVIEW PLACE I

25 CENTURY BLVD | NASHVILLE, TENNESSEE

A 116,654 SQUARE FOOT CLASS A OFFICE BUILDING LOCATED IN THE AIRPORT NORTH



CONTACT US

FRANK THOMASSON CCIM, SIOR

First Vice President

+1 615 493 9258

frank.thomasson@cbre.com

BYRAN FORT

First Vice President

+1 615 493 9259

byran.fort@cbre.com

© 2018 CBRE, Inc. All rights reserved. This information has been obtained from sources believed reliable, but has not been verified for accuracy or completeness. You should conduct a careful, independent investigation of the property and verify all information. Any reliance on this information is solely at your own risk. CBRE and the CBRE logo are service marks of CBRE, Inc. All other marks displayed on this document are the property of their respective owners. Photos herein are the property of their respective owners. Use of these images without the express written consent of the owner is prohibited.

